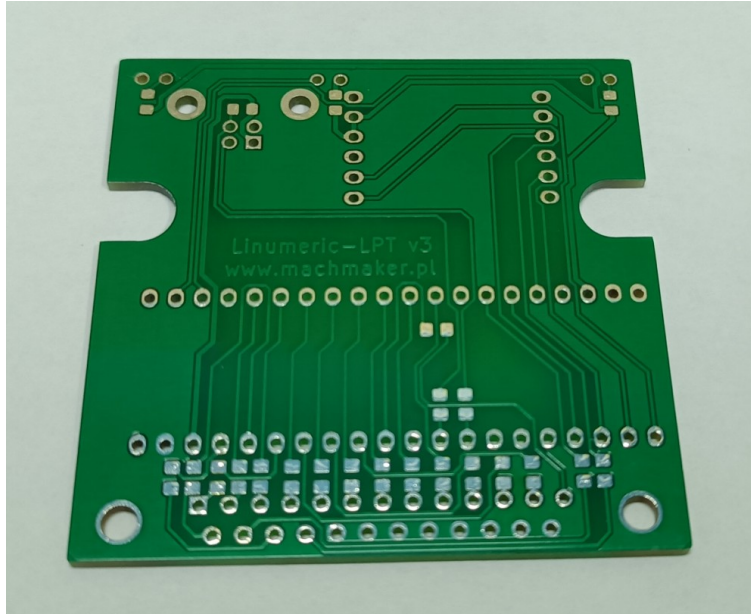


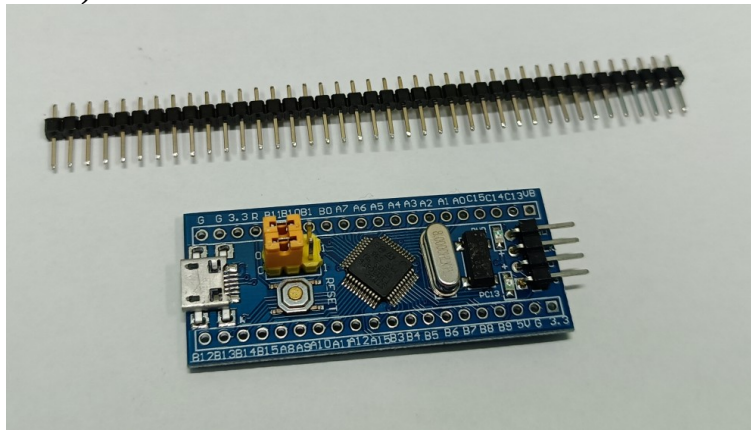
Linumeric-LPT V3 PCB Assembly EN

1. Items needed::

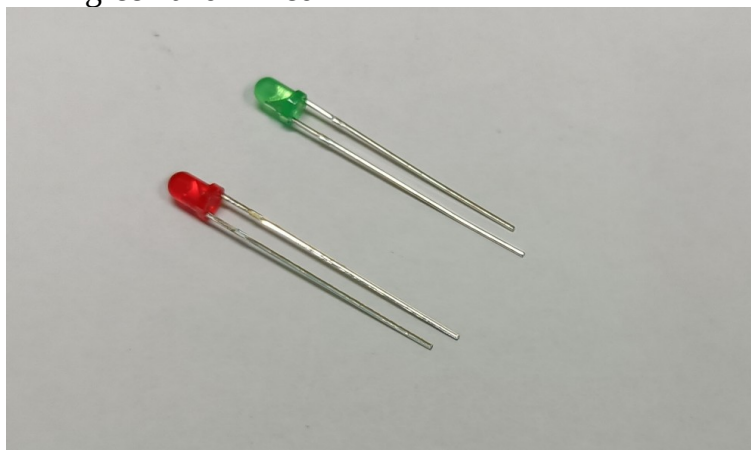
- a) PCB board x1



- b) *Blue-pill* module with STM32F103C8T6 microcontroller (original STM, not Chinese clone)



- c) LED 3mm 2x green and 1x red



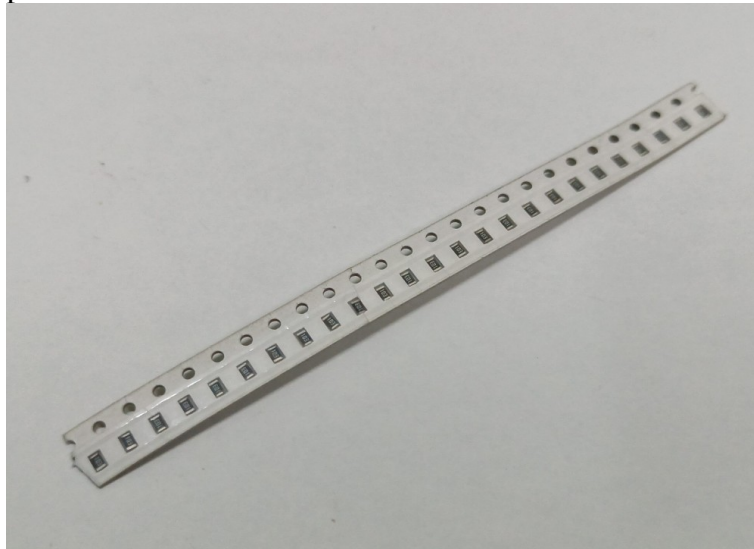
d) Resistors in the 0805 housing

-150R 17 pieces

-20R 2 pieces

-4.7k 1 piece

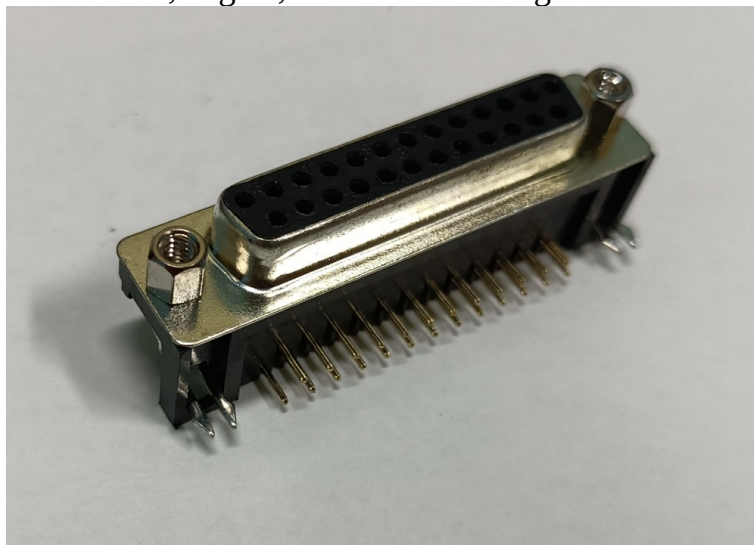
-220R 3 pieces



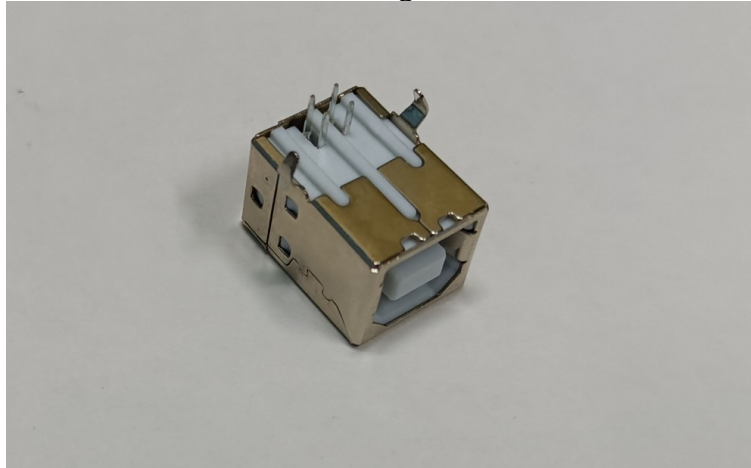
e) W5500 mini Ethernet module



f) DB25 female socket, angled, for PCB mounting



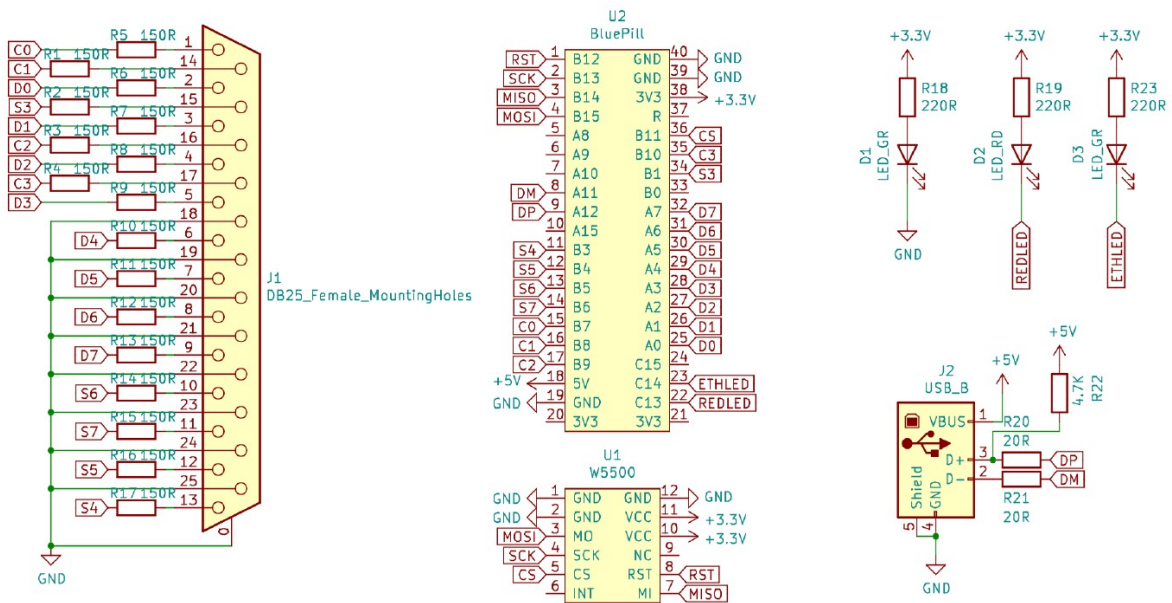
g) USB type B socket for PCB mounting



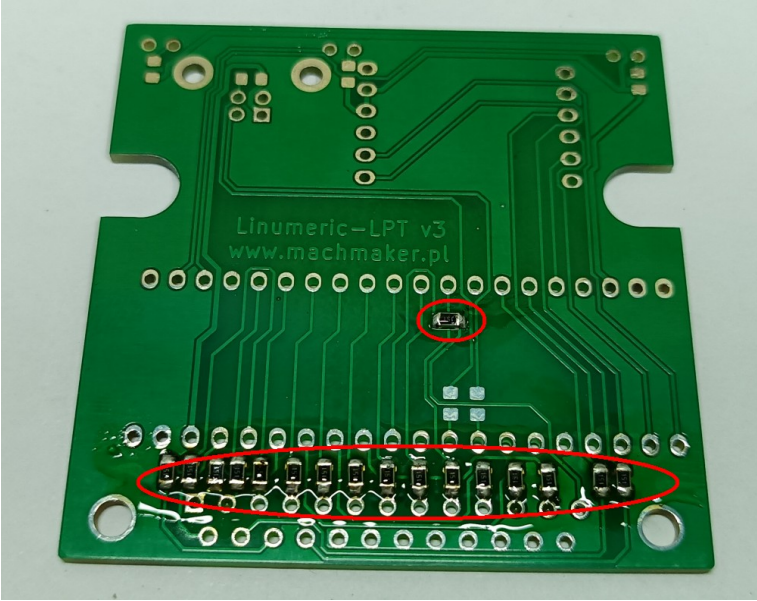
2. Instruments

- a) soldering iron with a precision tip,
- b) flux,
- c) tweezers
- d) solder
- e) PCB remover (can be isopropyl alcohol)

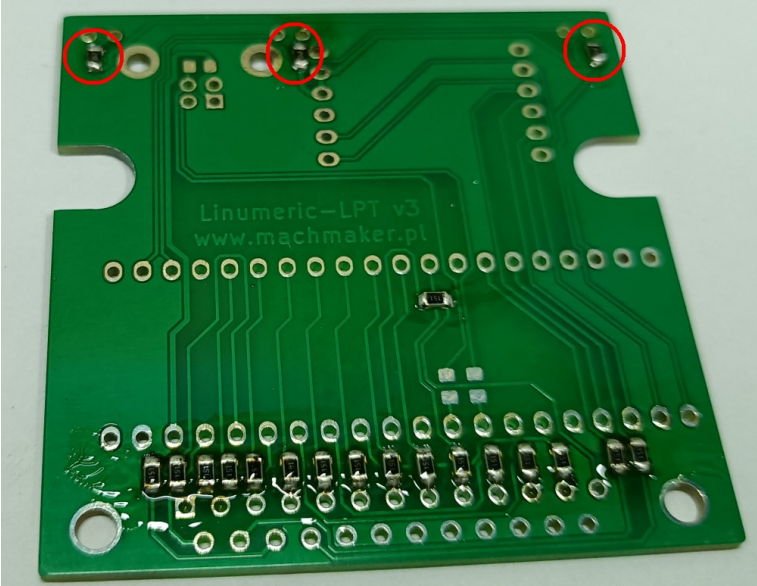
3. Device diagram



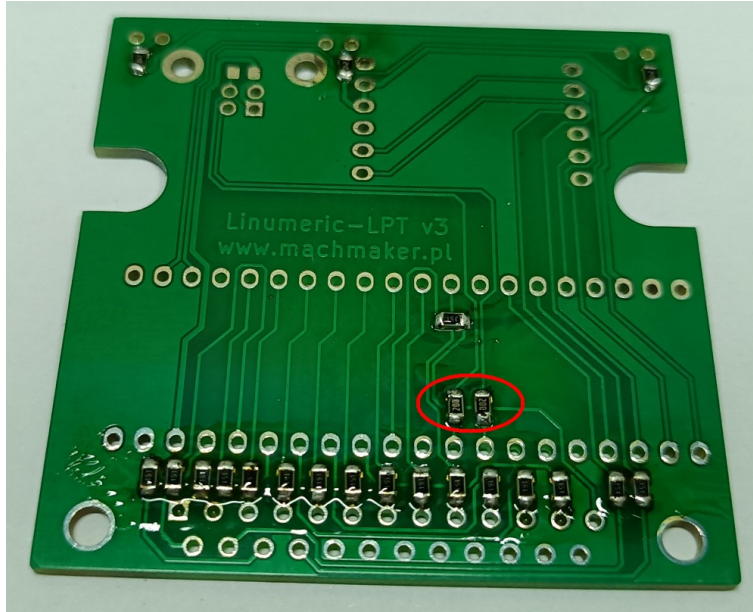
- 4. PCB assembly
 - a) Solder the 150R resistors



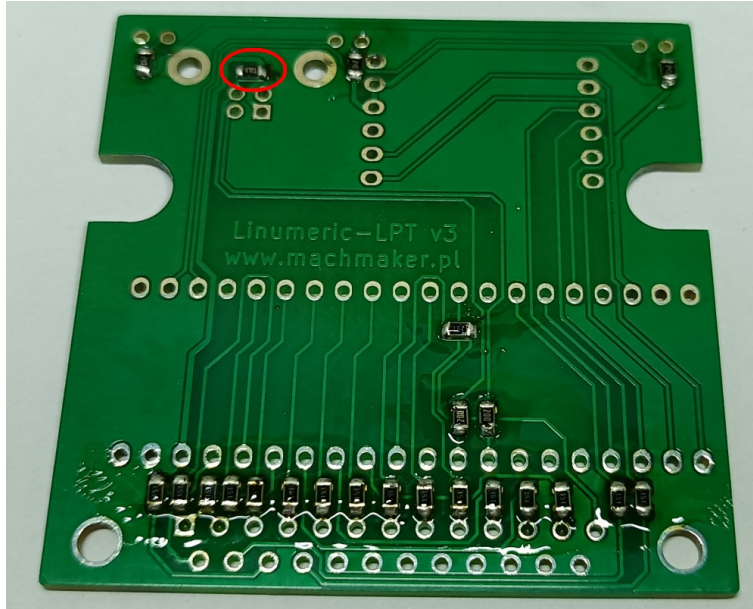
- b) Solder the 220R resistors



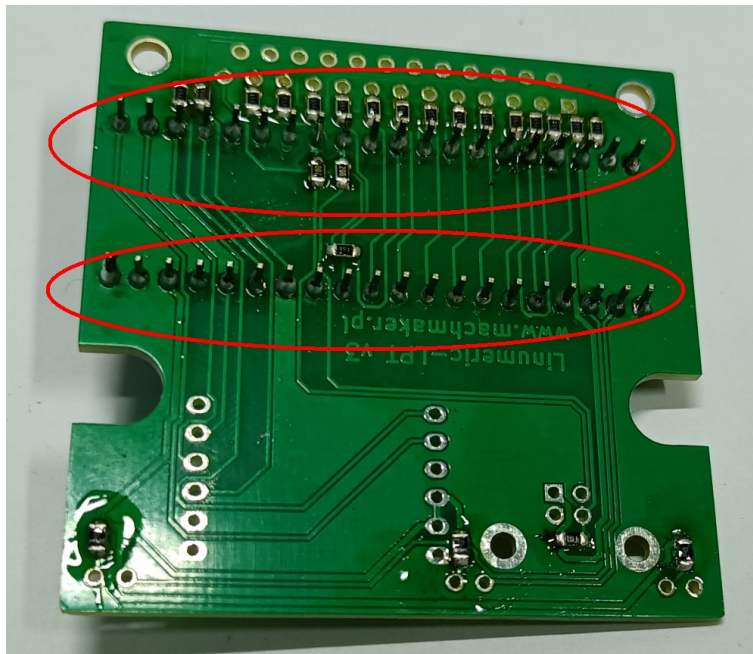
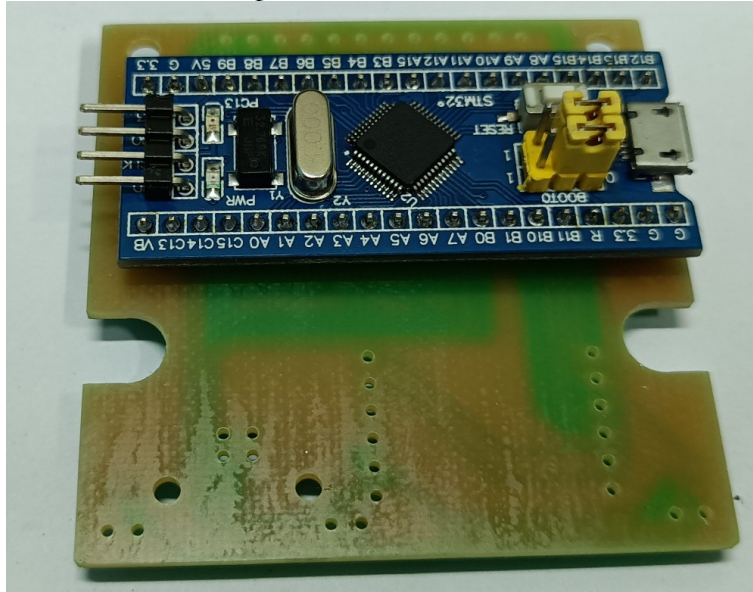
c) Solder the 20R resistors



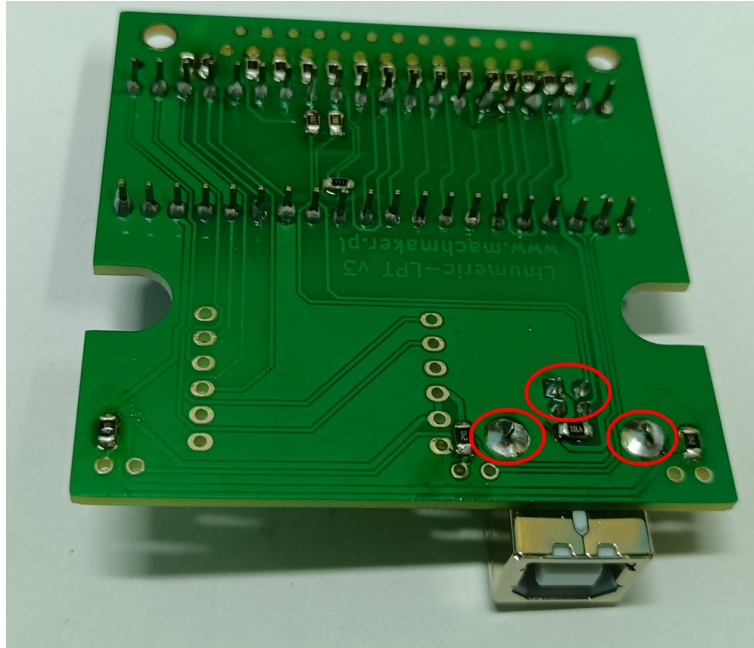
d) Solder the 4.7k resistors



e) Install and solder the blue-pill board

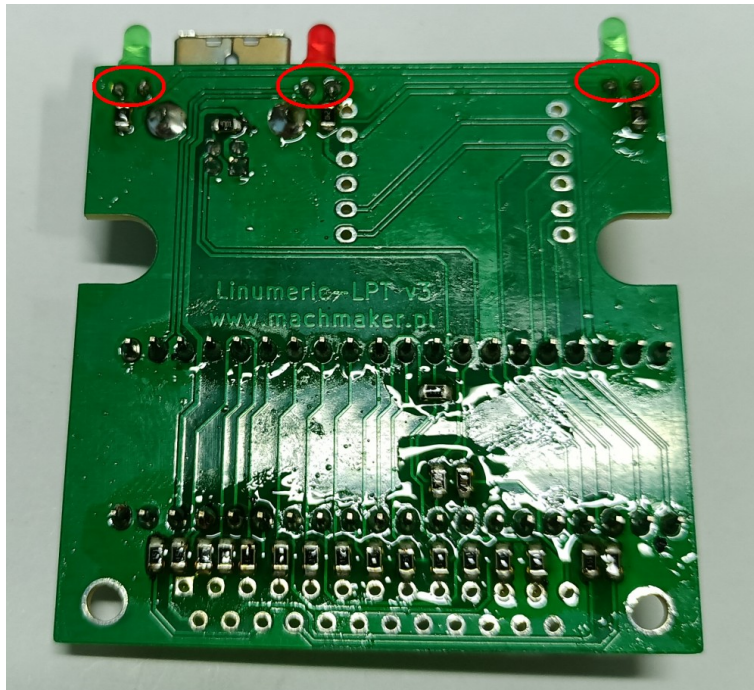
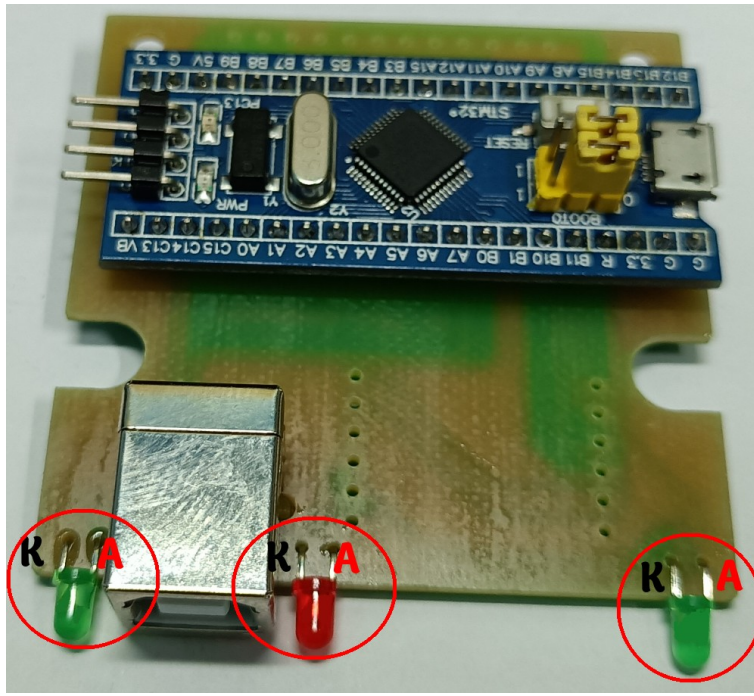


f) Install and solder the USB socket

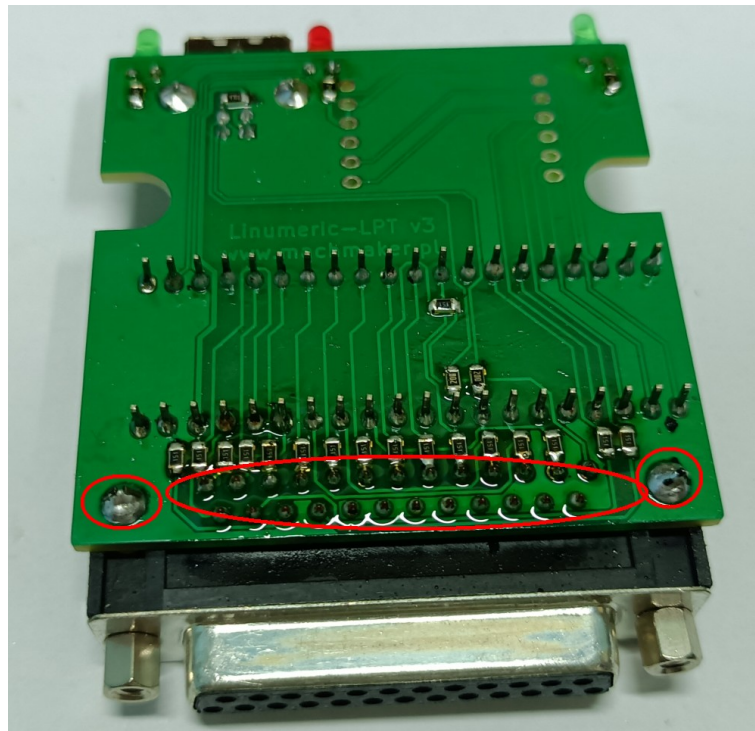
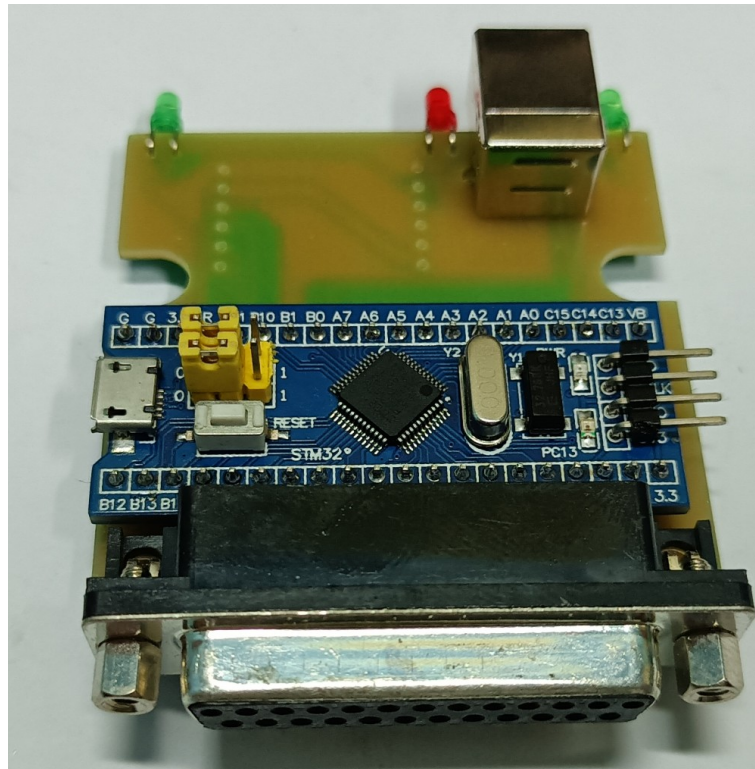


g) Install and solder the LEDs. Please pay attention to polarization





h) Install and solder the DB25 socket



i) Install and solder the W5500 Ethernet module

