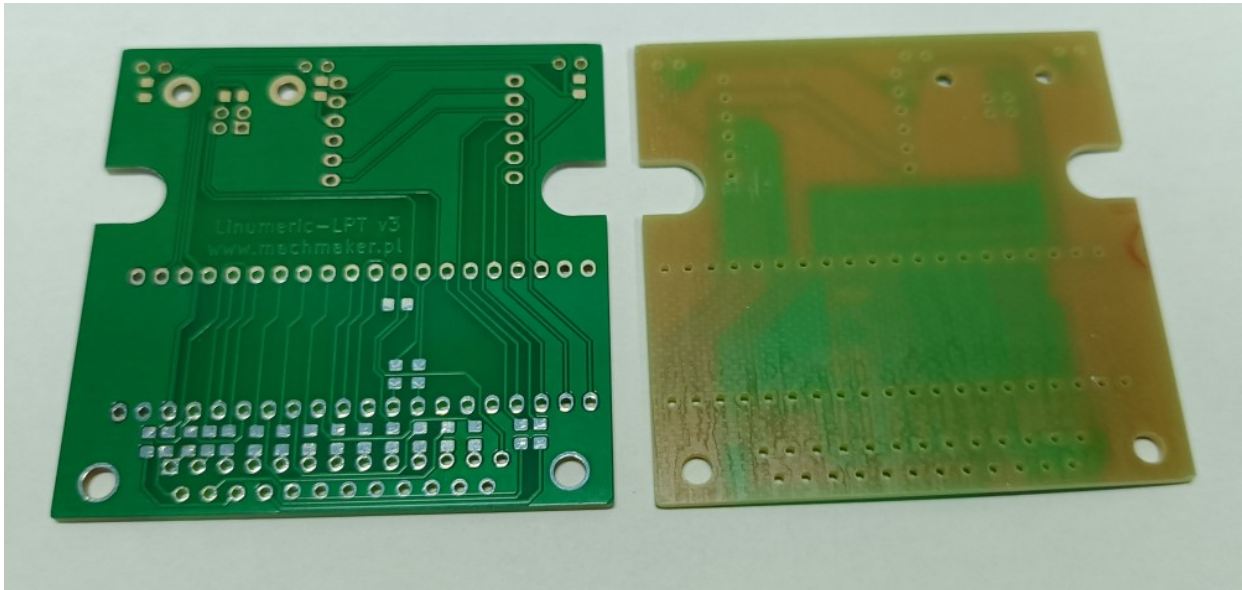


PCB production Linumeric-LPT V3 EN

The PCB is single-sided, without a descriptive layer, without metallization of holes. The board size is 55.5 x 56mm. The tile should be made on a 1.5mm thick laminate.



There are 2 production options to choose from:

- a) Production yourself (e.g. milling, etching, etc.)
- b) Production in a PCB production plant

An existing package of files has been prepared for production, which can be downloaded at the link:

https://machmaker.pl/data/files/Linumeric-LPT_V3_PCB_production_files.zip

After unpacking the archive, the following are available:

- a) **GERBER** catalogue
- b) **PCB DIY** catalogue
- c) **Linumeric-LPT V3 schematic.pdf** file

PCB production yourself

To use this option, the **PCB DIY** catalog includes SVG and PDF files (mirror images - prepared for etching) containing a copper layer and an outline of the board to be cut. All holes can be drilled with a 1mm drill.

Production in a PCB production plant

To use this option, you must send files from the **GERBER** catalog to the company dealing with PCB production.